

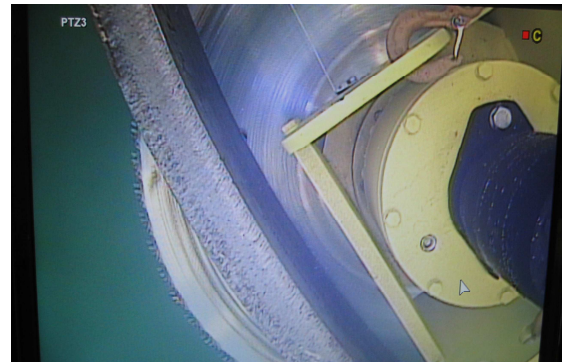
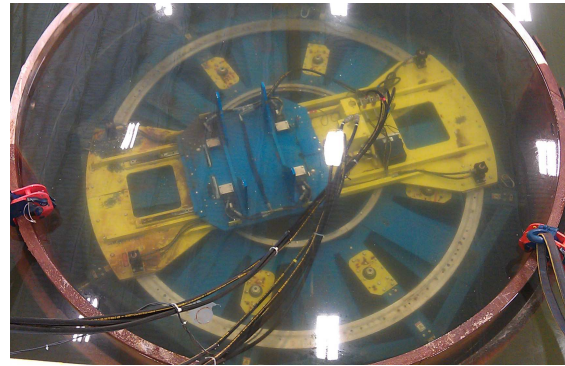
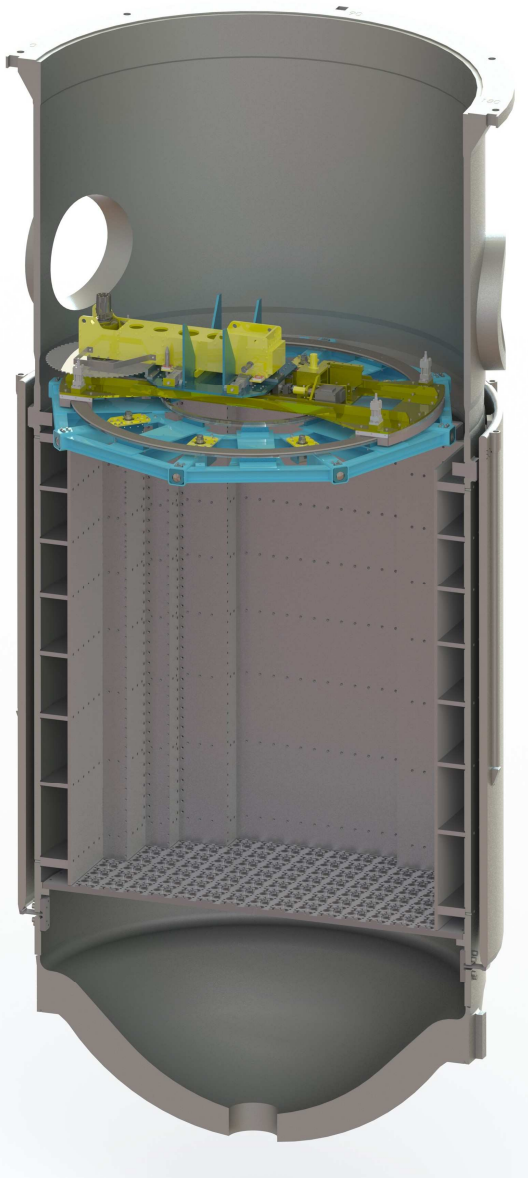


Supporting Siempelkamp Nuclear Services, Inc in the Design and Fabrication of Segmentation Equipment for the Zion Station D&D Project



360-degree Milling Machine for Remote Core Barrel Operations

This remotely operated machine is used to cut the Core Barrel and Thermal Shield on a Westinghouse PWR. This machine is hydraulically powered with an HMI touchscreen operator interface.



- 12-ft (3.5m) Diameter
- 360-Degrees of Motion
- 38-inch (1m) Diameter Blade
- Remote Underwater Operation
- Computer Interface
- Position Feedback
- Turnkey System
- Nuclear Environment

